

# CIRCUIT BOARD & ELECTRONIC COMPONENT LABELS

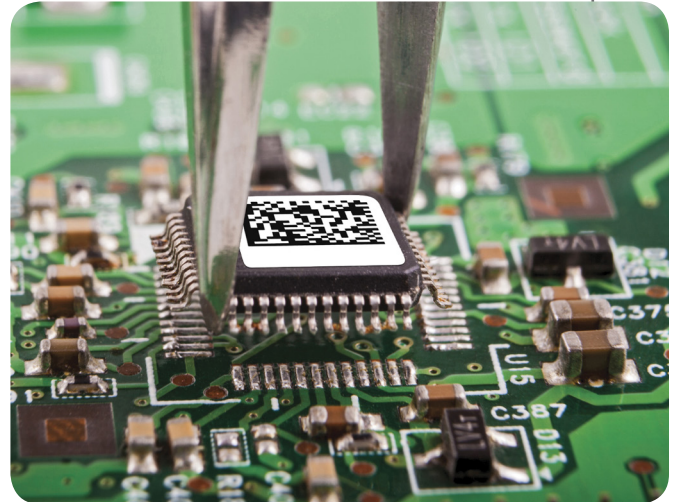
## TTL™ 100 SERIES

### HIGHLIGHTS

- Endures harsh manufacturing environments
- Renders lifelong identification
- **UL/CSA approved\***

### FEATURES

- Thermal transfer printable
- Top-side, bottom-side, or after-process identification



Engineered for use on printed circuit boards (PCBs) and electronic components, the TTL™ 100 series labels endure harsh environments such as high heat, aggressive fluxes, and caustic cleaners commonly used in the manufacturing process. Materials are intended for top-side, bottom-side, or after-process identification.

To achieve optimal print quality, durability, and **UL/CSA recognition**, IDENTCO TTL™ 100 series products have been thoroughly tested and qualified to match a TTRR™ series ribbon.

**\*UL/CSA recognitions are contingent upon printing with the appropriate IDENTCO material and TTRR™ ribbon combination specified by the Underwriters Laboratories and Canadian Standards Association.**

### IN-STOCK MATERIALS INCLUDE:

- White polyester
- Silver polyester
- White polyimide
- Tan polyimide
- Low-profile polyimide
- Anti-static polyimide

Refer to pages 5-17 for charts and specifications



# TTL™ 100 SERIES

Actual Size	Part #	Inches (w x h)	mm (w x h)	Labels per row
	TTL140-XXX - 10	0.17 x 0.13	4.32 x 3.30	5
	TTL100-XXX - 10 TTL124-XXX - 10 TTL148-XXX - 10	0.25 x 0.25 0.25 x 0.25 0.25 x 0.25	6.35 x 6.35 6.35 x 6.35 6.35 x 6.35	12 8 7
	TTL113-XXX - 10	0.27 x 0.27	6.86 x 6.86	5
	TTL139-XXX - 10	0.30 x 0.20	7.62 x 5.08	5
	TTL111-XXX - 10	0.3125 x 0.3125	7.93 x 7.93	5
	TTL146-XXX - 10	0.315 x 0.315	8.00 x 8.00	8
	TTL116-XXX - 10 TTL125-XXX - 10	0.375 x 0.375 0.375 x 0.375	9.52 x 9.52 9.53 x 9.53	7 4
	TTL145-XXX - 25	0.449 x 0.157	11.405 x 3.98	6
	TTL121-XXX-10 TTL126-XXX-10	0.50 x 0.20 0.50 x 0.20	12.70 x 5.08 12.70 x 5.08	5 4
	TTL101-XXX-10	0.50 x 0.25	12.70 x 6.35	5
	TTL112-XXX-10 TTL127-XXX-10	0.50 x 0.4375 0.50 x 0.4375	12.70 x 11.125 12.70 x 11.125	5 3
	TTL137-XXX-10	0.60 x 0.25	15.24 x 6.35	1
	TTL102-XXX-10 TTL128-XXX-10 TTL136-XXX-10	0.65 x 0.20 0.65 x 0.20 0.65 x 0.20	16.51 x 5.08 16.51 x 5.08 16.51 x 5.08	4 2 1
	TTL122-XXX-10	0.70 x 0.375	17.78 x 9.53	4
	TTL103-XXX-10 TTL129-XXX-10 TTL141-XXX-10	0.75 X 0.25 0.75 X 0.25 0.75 X 0.25	19.05 x 6.35 19.05 x 6.35 19.05 x 6.35	4 1 4
	TTL123-XXX-10	0.75 x 0.75	19.05 x 19.05	4
	TTL104-XXX-10 TTL130-XXX-10	0.90 x 0.25 0.90 x 0.25	22.86 x 6.35 22.86 x 6.35	3 1
	TTL135-XXX-10	1.00 x 0.25	25.40 x 6.35	1

Actual Size	Part #	Inches (w x h)	mm (w x h)	Labels per row
	TTL105-XXX-10 TTL131-XXX-10	1.0 x .375 1.0 x .375	25.40 x 9.53 25.40 x 9.53	3 1
	TTL106-XXX-10 TTL147-XXX-10	1.00 x 0.50 1.00 x 0.50	25.40 x 12.70 25.40 x 12.70	3 1
	TTL144-XXX-10	1.00 x 1.00	25.40 x 25.40	3
	TTL138-XXX-10	1.1 x 0.38	27.94 x 9.65	2
	TTL118-XXX-10 TTL134-XXX-10	1.25 x 0.25 1.25 x 0.25	31.75 x 6.35 31.75 x 6.35	2 1
	TTL149-XXX-10	1.25 x 0.375	31.75 x .953	2
	TTL115-XXX-10 TTL133-XXX-10	1.50 x 0.125 1.50 x 0.125	38.10 x 3.18 38.10 x 3.18	2 1
	TTL114-XXX-10 TTL132-XXX-10	1.50 x 0.25 1.50 x 0.25	38.10 x 6.35 38.10 x 6.35	2 1
	TTL119-XXX-10	1.5 x 0.5	38.10 x 12.70	2
	TTL107-XXX-10	1.75 x 0.25	44.45 x 6.35	1
	TTL117-XXX-10	2.0 x 0.25	50.80 x 6.35	1
	TTL109-XXX-10	2.0 x 0.375	50.80 x 9.53	1
	TTL120-XXX-10	2.0 x 0.5	50.80 x 12.70	1
	TTL110-XXX-10	3.0 x 0.3125	76.20 x 7.93	1