



Automotive Label Solutions



Label Solutions for the Automotive Market

At IDENTCO®, we understand that a label can be a mission-critical component of your product. We have a 36-year history of providing print-on-demand and custom-printed label solutions that endure the harshest environments. Our wide range of durable labels and printing systems is backed by a team of professionals dedicated to customer satisfaction, application expertise, technical support, flexibility and responsiveness.

Consult with IDENTCO for labeling solutions to solve your most challenging track-and-trace, harness assembly, subassembly, and finished product labeling problems.



In-Vehicle

- Wire harness
- Smart seating
- Infotainment
- Cabin lighting
- Warning and safety
- Track and trace
- Warranty



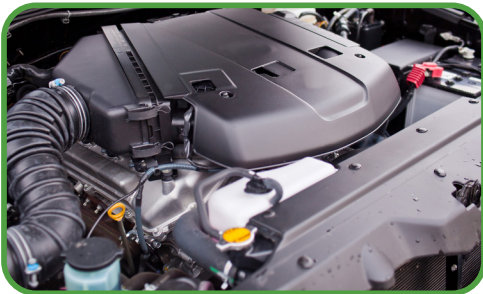
Out-Vehicle

- Fuel cap instructions
- Tire pressure
- Disc brakes
- Warning and safety
- Track and trace
- Warranty



Under the Hood


- Wire harness
- Engine block
- Fluid caps / containers
- Battery management
- Warning and safety
- Track and trace
- Warranty



Performance that goes the distance

Every part of designing a car is important, down to the instruction and warning labels. IDENTCO® Automotive labels can withstand a variety of extremes, including abrasive chemicals, challenging surfaces, and the forces brought on by normal wear and tear. To make sure they adhere to the stringent criteria for automotive electronics, our products have been put to the test against many of the key global OEM label specifications.

Manufacturer	Specification Number	Description
Ford Motor Company	WSS-M99P41-A10/A72	Performance requirements for all Ford vehicle labels
General Motors	GMW14573	Global performance requirements for labels
Volkswagen	TL52038	VW self-adhesive label material requirements



Printability of the design



Flammability



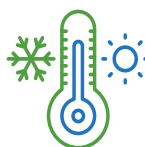
Chemical and solvent resistance



Ribbon selection



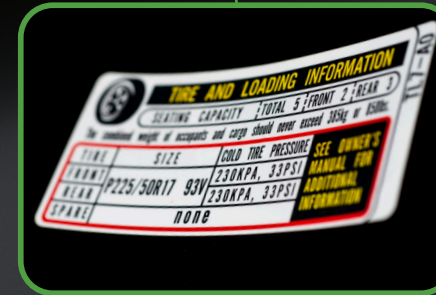
Adhesive properties
Adhesive composition
Application temperature



Operating temperature
Low temp cycle, 48hrs, -30°F, ambient RH
Humid cycle, 48hrs, 90°F, 85% RH
High temp cycle, 48hrs, 130°F, 25% RH



Abrasion resistance;
preprint and imprint

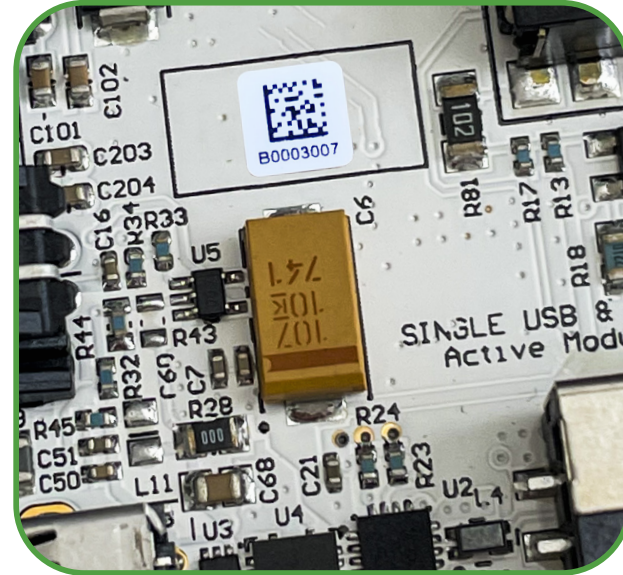


Product Lines



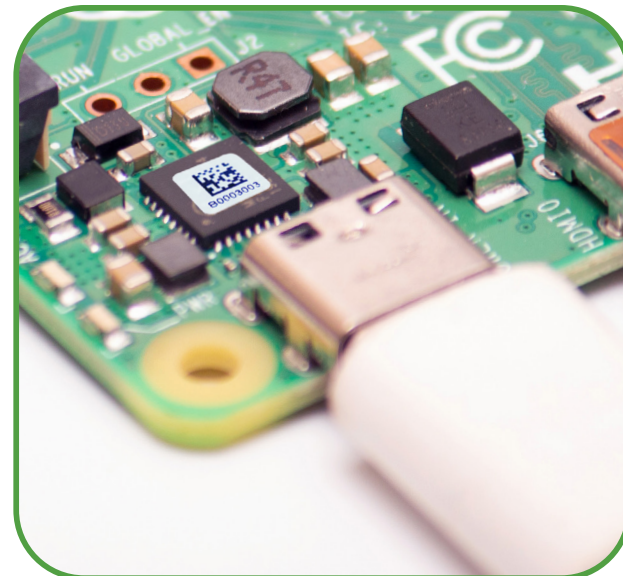
Track & Trace Labels

- Blank print-on-demand labels
- Wide range of stock sizes
- Quick-response custom sizes
- Polyimides, polyesters, and vinyls withstand temperature extremes and harsh solvents
- Ink-receptive topcoats ensure legend durability
- PPAP available

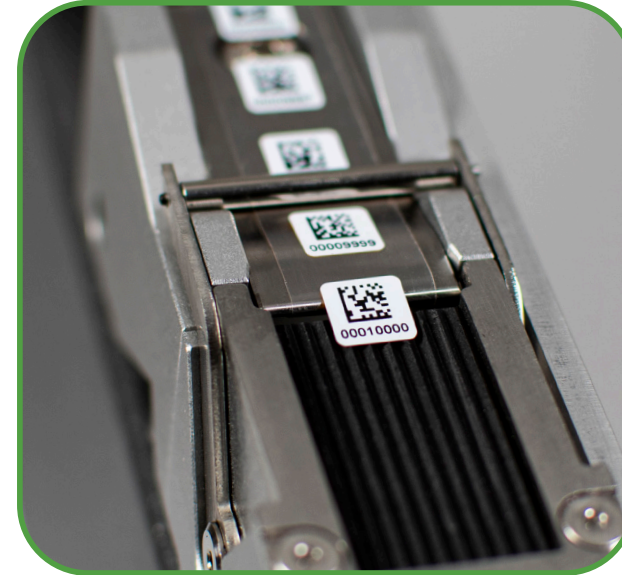


SMT Pick & Place Labels

- Micro-labels for SMT applications
- Engineered for reliable dispensing in auto-apply systems
- Accurate label presentation and placement
- Blank print-on-demand or pre-printed by IDENTCO® Print Service Centers
- Stock sizes designed to fit SMDs and crowded PCBAs
- PPAP available

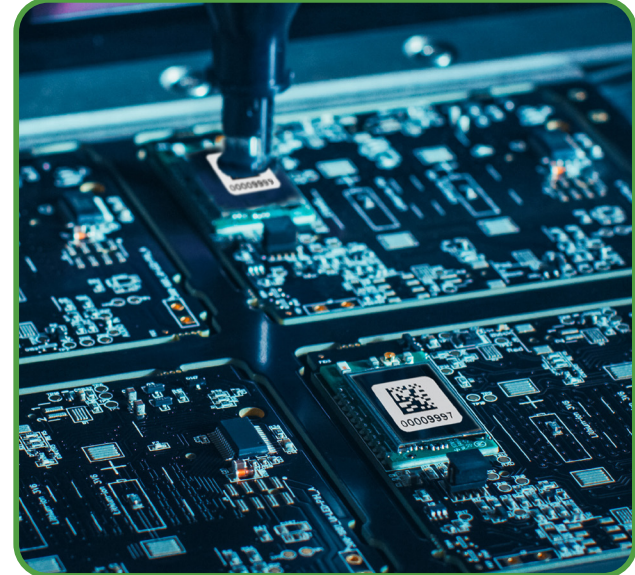


Product Lines



SMT Label Presenters

- Reliable, accurate presenting of IDENTCO® pick & place labels
- Compatible with Fuji, Juki, Panasonic, Universal, Yamaha, and other major pick & place machines
- Space-saving slim design
- Easy setup, label loading and change-over



Wire Harness Markers

- Print-on-demand labels and sleeves
- Conformable self-laminating vinyl
- Heat-shrinkable polyolefin
- Wide range of stock sizes
- Custom sizes available
- PPAP available

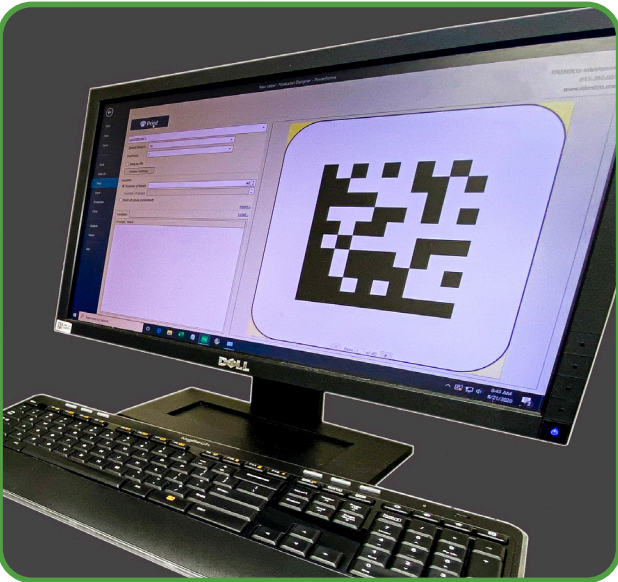




Informational

- Blank print-on-demand labels and custom preprinted
- Wide range of stock sizes
- UL/CUL approved high-performance materials*
- PPAP available

* when used with IDENTCO® ribbons



Print Service Centers

- Cost-effective alternative to in-house printing
- Ideal for variable data applications
- 100% verified 2D & linear barcodes
- Located in USA, Mexico, and Europe

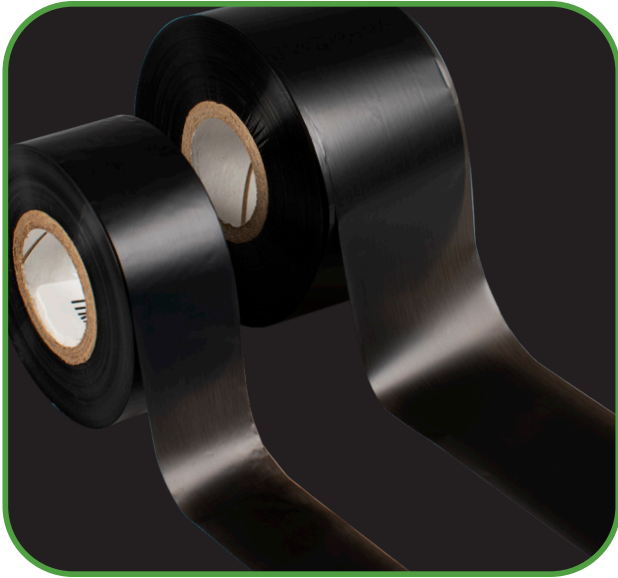


Thermal Transfer Printers

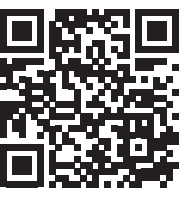
- Designed for use in manufacturing environments
- wIntuitive user-interface
- Easy loading of media

Thermal Transfer Ribbons

- For optimal performance with IDENTCO® labels
- Multiple resin formulations available
- Legend permanence for harsh applications



For detailed information and specifications, download our catalogs or contact us at sales@identco.com



Added Value Beyond the Label

Design Flexibility

With every new model year of a vehicle, IDENTCO® is aware of the necessity to adapt to design modifications. Together with your team, our label systems engineers can provide a flexible label solution for varying applications.

In-house Testing

Our R&D and test lab enables us to simulate the conditions your labels may face. Testing capabilities include chemical resistance testing, peel adhesion testing, accelerated UV exposure testing, abrasion and rub resistance testing, temperature & humidity cycle testing, and water bath testing.

Rapid Prototyping

Moving at the speed of business means responding with custom solutions and fully-functioning prototypes when you need them. With advanced Digital Express Centers at each of our North American production locations, we can provide you with production-quality label prototypes in a matter of hours – not days or weeks.



Local Customer Service & Technical Support

With locations across the United States and Mexico, you can be assured that our highly responsive service and support is right around the corner. Local production and warehousing means product when you need it.

Value Engineering

Our team actively analyzes current projects and trends for value engineering opportunities. This can mean consolidating labels, delivering additional functionality to an existing label, or suggesting alternative cost-effective production options. We understand the value that organizations place on value engineering initiatives, and we will work with you to deliver on your targets.

Supplier Consolidation

IDENTCO®'s expertise in durable custom labels and print-on-demand labeling solutions means that all your labeling solutions are available from the industry's most trusted source. Work with us to consolidate your supplier base and uncover new efficiencies.






Our Commitment to Quality

IDENTCO is proud of having manufacturing sites qualified to IATF16949. The IATF standards define the requirements of a quality management system for organizations involved in the automotive industry.

IATF is a quality management standard for Tier 1 and 2 automotive suppliers as required by the OEMs such as Ford, GM, and BMW.

AIAG

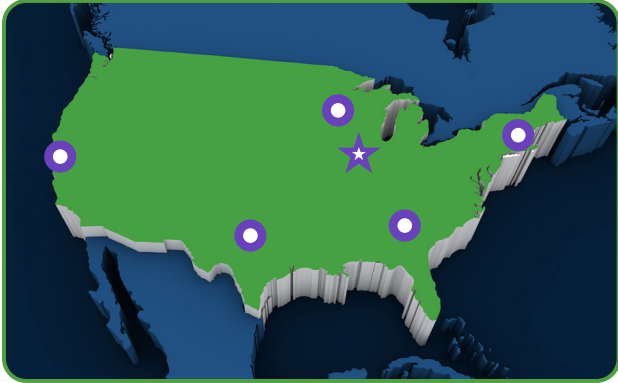
IATF 16949:2016
ISO 9001:2015
ISO 14001:2015

Technical, Commercial, and Quality Experts



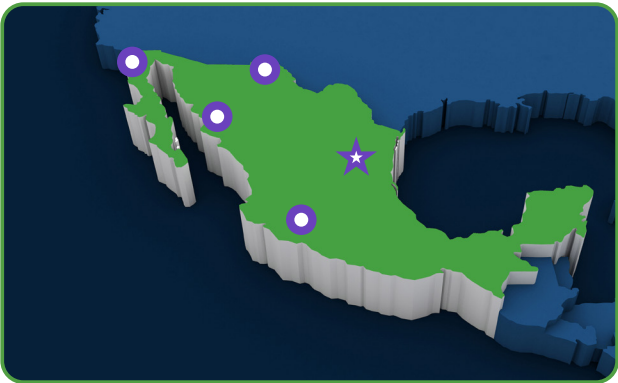
Automotive Task Force



★ **IDENTCO USA**
Ingleside, IL
Corporate Headquarters &
Center of Excellence

○ **Regional Offices**
Boston, MA • Atlanta, GA • Austin, TX
Minneapolis, MN • San Jose, CA

North America
Manufacturing
Digital Express Center
Print Service Center
Research & Development Lab
Quality Assurance Lab
Local Technical Support &
Customer Service



★ **IDENTCO Mexico**
Monterrey, Mexico
Center of Excellence

○ **Regional Offices**
Tijuana • Hermosillo • Ciudad Juarez •
Guadalajara



★ **IDENTCO Europe**
Hanau, Germany

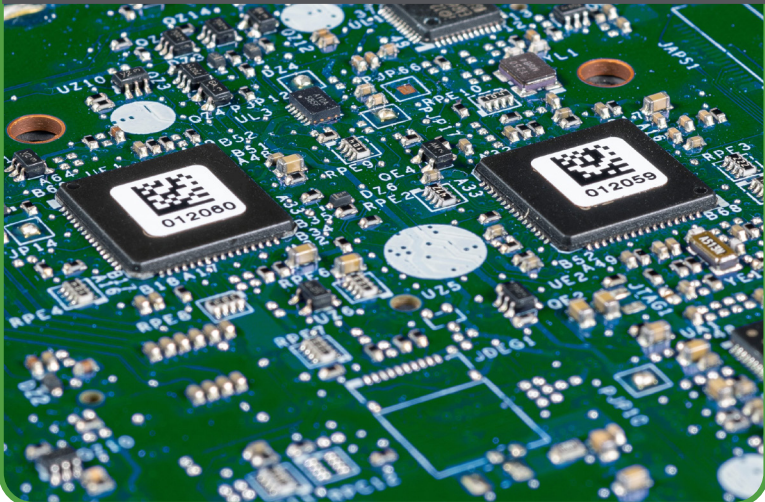
Europe
Sales
Print Service Center
Local Technical Support &
Customer Service

Our Markets

Transportation



Electronics



Power Equipment



Industrial



About IDENTCO®

IDENTCO® is a customer-focused manufacturer of high-performance labeling solutions for product tracking, tracing, branding, compliance, and identification. We specialize in complete print-on-demand labeling solutions and ultra-durable high graphic content custom labels. With locations across the US and Mexico, IDENTCO supplies global OEMs and contract manufacturers with durable label solutions for the most extreme environments.

Our customers in the Transportation Power Equipment, Electronics, Industrial, and markets continue to partner with us because we listen, we're proven, and we deliver.

Founded in 1986, we believe the best solutions are achieved through collaboration and we are dedicated to providing our customers with engineering-focused support and solutions. Our 36-year track record of dedication to quality management, operational

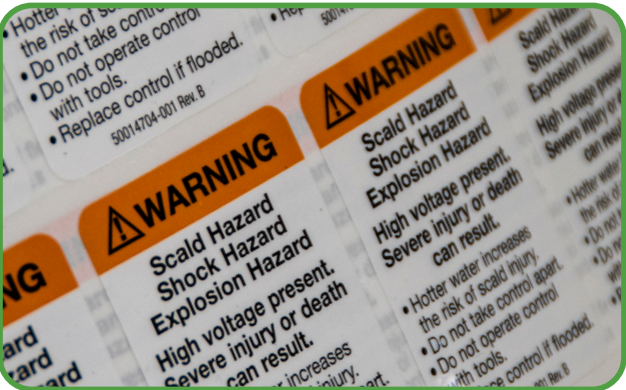
excellence, and customer service have made us the supplier of choice among top manufacturers designing products for the most demanding applications.

IDENTCO's reputation as a responsive and flexible partner is a direct result of our streamlined internal processes and, above all, our dedication to our customers. This dedication translates into unparalleled product performance, high on-time delivery performance, and competitive customer pricing.

Our products and services deliver improved performance while reducing costs for our customers, and our innovations are driven by comprehensive expertise in surface chemistry, adhesives, thermal transfer ribbon formulations, printable topcoats, and precision die cutting.

We offer a wide range of products that comply with the strictest international standards, including UL®, cUL®, and CSA®, and we are proud to be ISO 9001, ISO 14001, and IATF 16949 certified.

Contact us today and discover "Why IDENTCO"





Labels for Life.

**MEXICO
MONTERREY**
Carretera a Laredo KM 16.5
Bodega 14B Colonia Moisés Sáenz
Apodaca, Nuevo León CP 66613
Phone: +52 (81) 8008 - 0438

**UNITED STATES
HEADQUARTERS**
28164 W. Concrete Drive
Ingleside, IL 60041
Phone: +1 (815) 385 - 0011
Fax: +1 (815) 385 - 0359

**EUROPE
GERMANY**
Güterbahnhofstraße 3-7
63450 Hanau
Phone: +49 (6181) 440 830 - 0
Fax: +49 (6181) 440 830 - 99

identco.com

© 2022 IDENTCO®
QF-MKTG-AB v1.1
All Rights Reserved